

# Required Resistor Modification To RC210 For Use With AP1 Autopatch Board

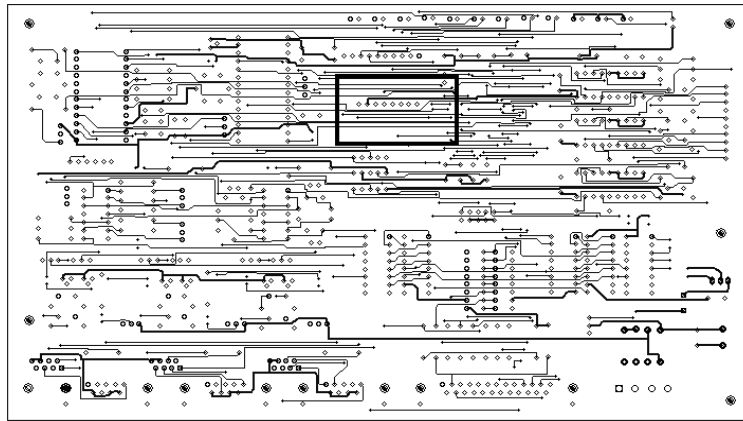
## Parts Required:

1 each 22K 1/4 watt resistor

## Instructions:

If necessary, remove the RC210 from its enclosure. If using our RC210R Rack Mount enclosure, this is easily done by removing the 4 screws mounting the board then removing the front panel by removing the 4 screws attaching it to the enclosure. Disconnect the LED switch connector from the pc board header and lift the board free from the enclosure.

Turn the board over. The area where the resistor will be added is shown below, highlighted by the rectangular area.



Solder the 22K resistor from Pin 8 to Pin 5 of J5 (version 3.0 board) or J7 (version 2.8) as shown.



Reinstall the board into the enclosure by reversing the steps taken to remove it.